

## DIGITAL DISTRIBUTION

**D3G-4**

**D3G-8**

ASI SDI-SD/HD/3G

### ► Expandables

Can be adapted to suit your needs

### ► Front leds indicators

For quick reading of the current operation mode and status



### MAIN FEATURES

- High-quality digital distribution amplifier with equalization and re-clocking
- 1 input / 4 outputs and 1 input / 8 outputs modules
- Automatic input equalization
- Automatic or forced input signal bit-rate detection
- Re-clocking with automatic or forced By-Pass for situations when the signal cannot be re-clocking
- Loss of signal, sync lock, bit-rate, and SD/HD/3G indicators
- Hot Swap redundant power supply for the 2U enclosure
- This system is part of the VideoSwitch transmission product offer in the ISDB-Tb standard, such as the 'ECD-3000' Encoder and the 'DMUX-3000i and DMUX-500i' Multiplexers

**Our Digital Distribution Amplifiers for ASI and SDI-SD/HD/3G signals are specially designed to perform digital signal distribution, in compliance with SMPTE 424M, SMPTE 292M, and SMPTE 259M-C standards.**

Each module has one input and 4 outputs, or one input and 8 outputs. The 1U enclosure supports up to 4 modules, while the 2U enclosure supports up to 10 modules and has Hot Swap redundant power supply.

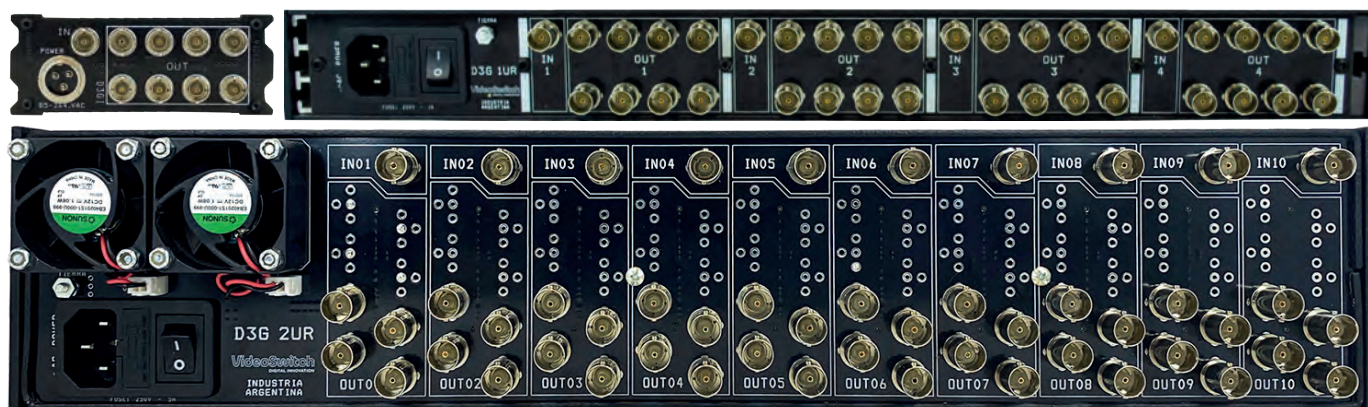
The individual version also allows rack mounting by adding two mounting ears, as well as grouping up to 4 units in the space of one single rack unit.

All inputs have automatic equalization, which allows compensating loss caused by passing high data rate signals through coaxial cables, supporting up to 400 meters of Belden 1694A type cable.

All outputs have automatic re-clocking to recover the original signal clock and re-timing it, thus eliminating the jitter, and offering the highest output quality

Each module also has signal loss and sync lock indicators for quick identification of the status of each signal. In addition, they indicate the frequency at which the re-clocker was locked and whether the input signal is SD, HD, or 3G.

All configuration options are made through a front Dip-Switch.



## D3G-4 D3G-8

### ASI SDI-SD/HD/3G

#### INPUT

Signal type: ASI, SDI-SD, SDI-HD, or SDI-3G  
Connector: BNC  
Impedance: 75 Ohms

#### OUTPUTS

Quantity: 4 / 8  
Connector: BNC  
Impedance: 75 Ohms  
Output signal amplitude: 800 mV +/- 10% DC Offset: 0.0 V +/- 0.1 V

#### FEATURES

Re-clocking Bit-Rate: 270 Mb/s, 1485 Mb/s, 1485/1001 GB/s, 2970 Mb/s, 2970/1001 GB/s  
Return Loss: >18dB @ 270 MHz, >15dB @ 1485 MHz, >10dB @ 2970 MHz  
Equalization: 0-400m @ 270 MHz, 0-200m @ 1485 MHz, 0-140m @ 2970 MHz (Belden 1694A type cable)  
Rise & Fall Time: 400-700ps @ 270 MHz, <270ps @ 1485 MHz, <135ps @ 2970 MHz  
Overshoot: <10 % amplitude  
Jitter: <0.2 Upp  
Propagation Delay: ~4ns  
Power: 4 outputs: 3W each board / 8 outputs: 4W each board  
Type of enclosure: Individual, 1U, 2U

#### ENCLOSURE

##### INDIVIDUAL

##### 1 RACK UNIT

##### 2 RACK UNITS

Capacity:	1 board	Up to 4 boards	Up to 10 boards
Voltage:	85-264VAC (47Hz-63Hz)	88-264VAC (47Hz-63Hz)	90-264VAC (47Hz-440Hz)
Power Supply:	Built-in, 1 x 5W	1 x 25W	2 x 55W
Power Supply Redundancy:	No	No	Yes
Hot Swap Power Supply:	No	No	Yes
Dimensions:	42 x 150 x 108 (H x D x W) [mm]	44 x 187 x 482 (H x D x W) [mm]	88 x 187 x 482 (H x D x W) [mm]