

## MULTIPLEXER

### DMUX-3100i

NEW  
CORE

NEW  
WEB  
INTERFACE

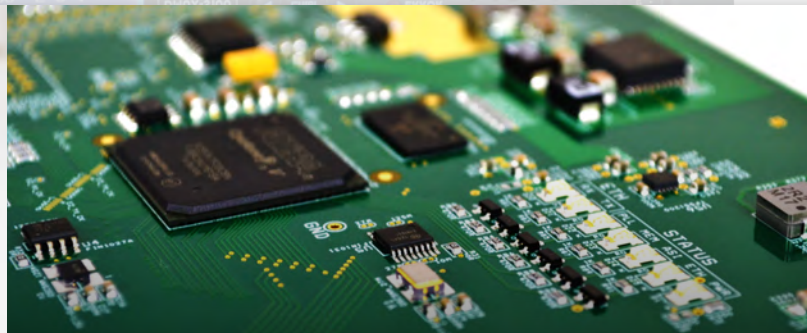
## ISDB-T INTERNATIONAL STANDARD

### Multiple Configurations

- ASI and IP inputs, with automatic redundancy
- Up to 4 BTS per device
- Service bit rate limiter
- EWBS (Emergency Warning Broadcast System)

### Interoperability

- With any transmitter that complies with the ISDB-T International standard



### MAIN FEATURES

- ▶ ISDB-T Multiplexer compatible with MPEG and ISDB-T International standards
- ▶ BTS generation according to ARIB STD-B31 and ABNT NBR 15601
- ▶ Independent Ethernet Video and Control interfaces with redundant option
- ▶ Manual and automatic PMT edition, allowing Closed Caption insertion, OAD, Ginga, etc.
- ▶ Compatible with ARIB TR-B14 operation guide which guarantees its correct working with every receiver
- ▶ Service bit rate limiter
- ▶ Automatic redundancy for inputs and services
- ▶ EWBS signaling for emergency information
- ▶ Synchronization for Single Frequency Networks
- ▶ Software licensing
- ▶ Supports EPG, Closed Caption and Ginga servers, including SSA (Auxiliary Services Server) from VideoSwitch
- ▶ Non PC-based, embedded FPGA/Microprocessor **NEW**

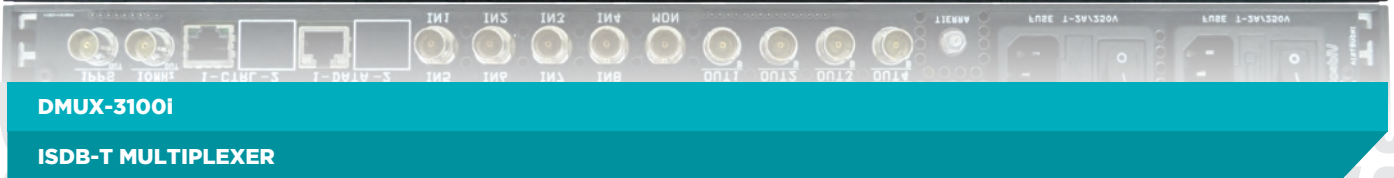
**Multiplexer Equipment for Digital Terrestrial Television broadcasting stations compatible with MPEG and ISDB-T International multiplexing standards. Prepared to operate both in MFN and SFN networks.**

It is capable of generating and retransmitting PSI and SI tables. It has 10 MHz and 1 PPS inputs and outputs for SFN network synchronization and it can optionally house a GPS receiver in the same case.

It has 1 or 2 IP Gigabit Ethernet (RJ-45) inputs and up to 8 ASI (BNC) inputs. All of them can be set as active or redundant.

It has from 1 to 4 ASI/BTS redundant outputs (2 BNC per each output) and 1 ASI/BTS Monitoring output (BNC). It is also capable of generating the BTS over IP Unicast as well as Multicast.

The device incorporates a simple and intuitive Web-configuration interface that makes system management easier and provides a user-friendly graphical interface so that any person with basic knowledge may operate it. It also provides support for SNMP monitoring and control systems. In every case, there is a user access control system so that only authorized users can operate it.



<b>DMUX-3100i</b>	
<b>ISDB-T MULTIPLEXER</b>	
<b>FUNCTIONS</b>	<ul style="list-style-type: none"> <li>• Multiplexing of up to 32 services by BTS</li> <li>• Independent Ethernet Video and Control interfaces with redundant option</li> <li>• Manual and automatic PMT edition</li> <li>• BTS generation in compliance with ARIB STD-B31 and ABNT NBR 15601</li> <li>• Generation and retransmission of PSI and SI tables according to ABNT NBR 15603</li> <li>• Correction and re-stamping of PCRs</li> <li>• Automatic redundancy per input and service with internal switch-over (L)</li> <li>• Automatic edition of EITs for Service ID correction (L)</li> <li>• Synchronization for SFNs (L)</li> <li>• Bitrate Limiter per input and service (L)</li> <li>• EWBS (Emergency Warning Broadcast System) signaling for Emergency Information (L)</li> <li>• Service splicing (L)</li> <li>• Optional: Embedded GPS receiver for internal generation of 10 MHz and 1 PPS References [G]</li> </ul>
<b>INPUTS</b>	<ul style="list-style-type: none"> <li>• Standard: 1 IP GbE Input/Output + 4 ASI inputs</li> <li>• Optional: 2 IP GbE Inputs/Outputs (2 x Data / Main + BackUp / Input + Output) [2ID]</li> <li>• Optional: 8 ASI Inputs (8 x Data / 4 x Data + 4 x Backup) [8A]</li> <li>• Supports up to 248 SPTS/MPTS over IP Unicast/Multicast + 4 (8) SPTS/MPTS over ASI</li> </ul>
<b>REFERENCES</b>	<ul style="list-style-type: none"> <li>• Input and Output (Active Loop) of 10 MHz and 1 PPS</li> <li>• High accuracy Internal Oscillator with Hold Over</li> <li>• Optional: Embedded GPS receiver [G]</li> </ul>
<b>OUTPUTS</b>	<ul style="list-style-type: none"> <li>• From 1 to 4 redundant ASI BTS (Main + BackUp) + 1 IP GbE Input/Output</li> <li>• 1 x ASI BTS (Monitoring)</li> <li>• Optional: 2 IP GbE Inputs/Outputs (2 x Data / Main + BackUp / Input + Output) [2ID]</li> </ul>
<b>CONTROL</b>	<ul style="list-style-type: none"> <li>• Software and Firmware management and update through a user-friendly and intuitive Web Interface <b>NEW</b></li> <li>• User control for access restriction</li> <li>• Hotswap front panel for basic configuration and access to fans and power supplies</li> <li>• Indication of the global status of the device with alarms and error log.</li> <li>• RS-232 port for service and maintenance</li> <li>• Monitoring and control through SNMP protocol (L)</li> <li>• Optional: Dual Ethernet Interface for control and monitoring [2IC]</li> </ul>
<b>OPTIONAL MODULES</b>	<ul style="list-style-type: none"> <li>• 4 ASI inputs expansion [8A]</li> <li>• Embedded GPS receiver [G]</li> </ul>
<b>GENERAL</b>	<ul style="list-style-type: none"> <li>• 1U 19" x 250mm (depth) - Single removable Power Supply</li> <li>• Optional: Hot-Swap Power Supplies [2 FNT]</li> <li>• Maximum Power Consumption 30W</li> </ul>

(L): Software licensing